

Ed Nawrocki

**President, East Region and Anderson Campus
St. Luke's University Health Network**

Board Chair

Board Member since 2021



Ed Nawrocki serves as the President of the East Region and Anderson Campus of St. Luke's University Health Network. As President, he oversees St. Luke's Monroe, St. Luke's Easton and Quakertown Campuses, in addition to day-to-day leadership of the Anderson Campus. Prior to serving as President of the East Region, he was President of the Anderson Campus since its opening in 2011. He was President of St. Luke's Quakertown Hospital from 2004 – 2011.

Prior to joining St. Luke's, Mr. Nawrocki worked at the University of Wisconsin Hospital and Clinics, Sentara Health System in Virginia and the University of Pennsylvania Health System.

Ed currently serves as a member of the Moravian Hall Square Retirement Community Board. He previously served as a member of the Hospital Association of Pennsylvania (HAP) Board, local United Way and Chamber of Commerce Boards.

Mr. Nawrocki earned a Bachelor of Science in Industrial Engineering from the University of Wisconsin-Madison and a Master of Science in Organizational Dynamics from the University of Pennsylvania.

Ed has been married for 28 years, has two children, one still in college studying Mechanical Engineering. In his free time, he enjoys everything Disney, travelling to National Park Service sites and cheering on the Badgers.

Dave Klante

Principal
DKE Consulting
Board Member since 2020



David Klante (Dave) is President at DKE Consulting, LLC, a consulting and advisory practice for the packaging, food and beverage industries. Emphasis on manufacturing, engineering, supply chain and technology solutions. Dave held positions in Engineering and Supply Chain at Rexam, Packaging Corporation of America (PCS), MillerCoors, and McCain Foods. Dave's work focused on facilities and capital plan development for over \$3B in capital investments, optimization of manufacturing systems, supply chain network design/optimization, automation, process control, decision support tools, new product development/innovation, and large-scale business transformation of manufacturing organizations. Dave held positions as VP Milwaukee Brewery Operations, Corporate VP Packaging, and Corporate VP Engineering and Packaging at MillerCoors; and VP Engineering at McCain Foods North America.

Dave volunteers with numerous state, community, church and charitable organizations and mentoring programs. Dave served as a Corporate Board Member for Milwaukee School of Engineering. Dave received a commendation for Innovation by the State of Wisconsin in Manufacturing for his work in workforce transformation and redesign at the Milwaukee Brewery for Miller Brewing Company.

Dave completed his bachelor's degree in Industrial Engineering at the University of Wisconsin – Madison in 1983 and received an Master of Manufacturing Engineering from Northwestern University in 1989.

Dave and his wife, Margaret, reside in Brookfield, Wisconsin. They have 3 Children and 4 grandchildren. Dave enjoys traveling, and the outdoors of Wisconsin with an emphasis on hiking, boating, fly fishing and upland game bird hunting.

Tina Lamers

Global Director of Mechanical Engineering, Advanced Safety and User Experience

Aptiv

Board Member since 2020



Tina Lamers is the Global Director of Mechanical Engineering, Advanced Safety and User Experience B.U. at Aptiv, a global technology company focused on the future of mobility. Prior to her time at Aptiv, Tina was the Senior Director of Engineering for Otter Products. She has over twenty years of experience in R & D, project management, and people leadership in the MEMS (micro-electro-mechanical systems), sensors, semiconductor, and automotive industries. Tina has been recognized for dramatically increasing performance of her teams through improved processes and expertise, collaborating with marketing and sales to define technology and product roadmaps, and combining detailed technical expertise with big-picture business savvy.

Tina holds several volunteer board positions including on the Transducer Research Foundation Board, which hosts technical conferences for the microsystems and sensors industries at which graduate students can showcase their research work. Tina was the 2018 General Conference Chair for the Hilton Head Solid State Sensors and Transducers conference. Growing the skills and potential of other women is a passion area for Tina, and she has volunteered as a ride leader and a trainer for mountain bike skills camps for women.

Tina completed her bachelor's degree in Industrial Engineering at the University of Wisconsin – Madison in 1996. She also holds a MS Manufacturing Systems Engineering and a PhD in Mechanical Engineering with a minor in Electrical Engineering from Stanford University.

Tina presently lives in Krakow, Poland with her husband while on expat assignment for Aptiv there. Her son is studying design and engineering at Montana State University. In her spare times she enjoys mountain biking, running, and playing volleyball. She also loves to try new foods, travel and explore cultures in countries around the world.

Anshul Pande

**Head of R&D & Senior Vice President
HealthEdge**
Board Member since 2020



Anshul Pande is a visionary technology leader with nearly 20 years of experience defining strategy and driving transformation for multi-billion-dollar companies. A people-oriented leader and relationship-builder, Anshul is passionate about building scalable teams capable of leading digital transformation and driving exponential company growth. Most recently, Anshul leads a global team of 500+ staff at HealthEdge to develop, deploy and service top US based health insurance companies.

Prior to HealthEdge, Anshul served as the CTO & VP for both Stanford Children's Health and ProMedica. Prior to those positions, Anshul served a long tenure working for Epic across multiple progressively responsible roles.

Anshul's professional background is complemented by his MS in Industrial Engineering and MS in Manufacturing Systems Engineering from the University of Wisconsin Madison. He additionally holds a BE in Manufacturing Systems Engineering from Delhi Institute of Technology.

Anshul possesses certifications including Oracle Certified Professional, IHI Patient Safety Executive Development Program, CHIME Certified Healthcare CIO (CHCIO). He additionally advises several health tech and security companies in the Bay Area. In his free time, he loves spending time with his family and playing soccer and golf.

Allison Radecki

Chief Information Officer

HAVI

Board Member since 2021



As Chief Information Officer, Allison is responsible for the information and digital technology functions globally, including strategic planning, product delivery, operations, security, controls and compliance. She is charged with leading the team to be a competitive asset for the company by focusing resources and prioritizing initiatives that deliver the greatest opportunities for revenue growth and improved business performance.

Prior to joining HAVI, Allison served as Chief Information Officer for Beam Suntory Inc., a world leader in premium spirits, Senior Director of Information Systems for Mondelēz International and spent 10 years at GS1 US as Senior Vice President and Chief Information Officer. Allison began her career in management consulting at PricewaterhouseCoopers where she spent ten years specializing in supply chain management process re-engineering and information systems implementation for the consumer products industry.

Allison received her Bachelor of Science degree in Industrial Engineering from the University of Wisconsin - Madison. She lives in Chicago and enjoys running, cooking, spending time with her husband, Steve, their three daughters and their Golden Retriever, Hazel.

Mindy Rapp

Chief Operating Officer

ScanPac Mfg., Inc.

Board Member since 2021



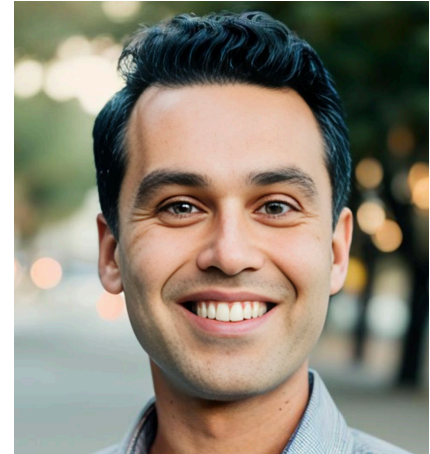
Mindy Rapp is the Chief Operating Officer at Scan Pac Manufacturing in Menomonee Falls, Wisconsin. Mindy is driving overall operational execution and R&D to deliver stability, compliance and predictability of business performance and transformation innovation through the development and implementation of processes, products and business systems that enhance our customer experience and reduce business risk. Mindy is responsible for delivering an innovative, focused approach in R&D for excellence in material manufacturability and differentiated competitive market offerings. Scan-Pac Mfg., Inc. is recognized as the industry leader in the development and manufacturing of organic friction products as well as Phenolic bearings and laminates.

Prior to Scan Pac, Mindy has served in a variety of senior leadership roles at MTI Motion, Clarios, Caterpillar and General Motors. In addition to the ISyE board, Mindy is the President of the Bradley University Industrial & Manufacturing Engineering Industrial Advisory Board. She is a recipient of the 2016 Society of Women Engineers Prism Award.

Mindy completed her bachelor's degree in Manufacturing Engineering at Bradley University in 1995, her master's degree in Manufacturing Systems Engineering at the University of Wisconsin-Madison in 1996 and received an MBA from Northern Illinois University in 2000.

Nadeem Sheikh

Independent adviser & investor
Board Member since 2021



Nadeem has spent the last 15 years working at the intersection of the mobility, and energy sectors, focused on scaling new technologies that can positively impact climate change and society.

Over the last 2 years, Nadeem has been focused on advising and investing in startups in the climate space, non-profit work and parenting two amazing kids.

Prior to taking a sabbatical from full-time work, Nadeem was most recently an executive at Woven, the software and AI division of Toyota, after its acquisition of Lyft's self-driving vehicle program. For 4 years, Nadeem was on the senior leadership team at Lyft, responsible for Lyft's plans to commercialize electric self-driving vehicles, including go-to-market strategy, BD, and operations. Nadeem also architected the industry's first long-term deals to deploy self-driving vehicles for public passenger service.

Prior to Lyft, Nadeem was on the executive team of Opower, an energy-focused software company which went public in 2014. Nadeem built & led Opower's business in APAC and Europe, responsible for sales, marketing, government affairs and customer success.

Earlier, Nadeem was a consultant at McKinsey & Company, where he was a founding member of the firm's Sustainability Practice and worked extensively in the Automotive and Energy sectors. While at McKinsey, Nadeem developed some of the firm's foundational thinking on vehicle electrification, battery technology, and shared mobility business models. Nadeem has also held roles at Accenture Technology Ventures, Lufthansa Airlines, and as a Fellow in German Federal government.

Nadeem received a BS in Industrial Engineering from the University of Wisconsin-Madison and his MBA from the University of California, Berkeley.

Nadeem and his wife Kate live in San Francisco with their children Dominic (5) and Vera (3).

Michael Yadgar

**Principal,
Americas SAP Leader
Ernst & Young**
Board Member since 2021



Michael is EY's SAP Leader, providing consulting and business integration services to the world's leading enterprises and public institutions. He has over 25 years of experience in client service and business development covering aspects of business transformation for leading organizations. Michael is consistently engaged in complex and strategic engagements in a variety of roles ranging from business advisor, delivery leader, client relationship management and quality assurance for the implementation. He is responsible for the services EY provides to clients, the strategic alliance between EY & SAP, as well as developing EY's brand and capabilities.

Prior to join EY, Michael worked for Accenture as a Managing Director, focused on SAP business transformation. While at Accenture, Michael attended the Advanced Business Management Program at Kellogg School of Business at Northwestern University.

After graduating from the University of Wisconsin-Madison in 1992 with a Bachelor of Science in Industrial Engineering, with an additional major in Statistics, Michael worked for Best Foods Baking group as a Manufacturing Specialist.

Michael and his wife Susan have created the Michael J. & Susan E. Yadgar scholarship to recognize an Industrial Engineering undergraduate student who is focused not only on excelling in academics, but also on impact outside of the classroom.

Michelle Ranavat

Founder and CEO

RANAVAT

Board Member since 2022



Michelle Ranavat leverages her expertise in the pharmaceutical industry and her background in engineering to create a line of beautiful skin and hair treatments that honor her South Asian heritage. Each formulation is composed of the highest caliber Ayurvedic ingredients for transformative skin and hair care results across all skin and hair types.

Distinguished Ayurvedic and adaptogenic cutting-edge actives such as Saffron, Ashwagandha, Turmeric, Manjistha, Amla, and Bakuchi are hand selected for real results. The luxurious collection is proven by science and rooted in ritual. Founded in 2017, RANAVAT launched into Sephora this year with 8 of their best-selling products to become the first Ayurvedic skincare brand to launch at the iconic retailer. The brand proudly donates 1% of proceeds to Desai Foundation, a non-profit organization in India that empowers women and children through community programs to elevate health and livelihood in India and the U.S.

Michelle received her Bachelor of Science degree in Industrial Engineering from the University of Wisconsin-Madison, and her Master's degree in Engineering Management from Tufts University.

Mike Geraghty

**Director of Marketing and Commercial Integration
BD**

Board Member since 2023



Mike Geraghty leads the US Marketing and Commercial Integration for the Medication Management Solutions division of BD. BD is one of the top five medical device companies in the world and provides essential technologies, services, and solutions to help the healthcare community improve safety and increase efficiency.

In his 20-year tenure with the organization, Mike has held several sales and strategic leadership roles and has worked with many of the largest health systems in the US. In his current leadership role, he led many of the business unit's COVID pandemic response initiatives, strategic planning programs, M&A evaluations, and new acquisition integration efforts.

Prior to joining BD, Mike worked for Siemens Medical Solutions and spent three years in hospital administration at St. Mary's Hospital in Madison, Wisconsin.

Mike has a Bachelor of Science degree in Industrial Engineering from the University of Wisconsin-Madison and has studied improvisation comedy at the Groundlings Theater in Hollywood, CA. He resides in Carlsbad, California with his wife and they often visit their two college-aged boys in Los Angeles and San Luis Obispo, CA. In his free time, he enjoys competitive running, stand up paddleboarding and mountain biking.

Nicole Rybeck Wolcott

Senior Manager, Early Talent Programs

Kohler Co.

Board Member since 2023



Nicole Rybeck Wolcott is the Senior Manager of Early Talent Programs at Kohler Co., responsible for the development and growth of the company's leadership rotational programs in addition to their intern and coop programs. Prior to her time at Kohler, Nicole spent several years at Meta where she led the strategy and launch of their first-ever scaled leadership hiring program.

Nicole began her career as part of GE's Digital Technology Leadership Program and spent 12 years with the organization where she held leadership roles across multiple functions including IT, Global Services and HR. During her time at GE, Nicole also had the opportunity to lead the company's relationship with the University of Wisconsin - Madison and partner with departments and leaders across campus.

Nicole is active in her community and serves as a long-time board member for the Brittingham Viking Scholarship Organization, a 70-year-old scholarship program dedicated to providing immersive cultural exchange experiences between the Nordics and US. In addition to her passion for developing community at a global level, Nicole is passionate about developing community locally. She serves as Nominations Committee Chair for Hoan Group, an organization dedicated to connecting thought leaders across Southeastern Wisconsin, and is an active member of TEMPO Milwaukee.

Nicole earned her Bachelor of Science degree in Industrial Engineering from the University of Wisconsin - Madison in 2009. She holds a second degree in French and spent time studying engineering management at Aalto University in Helsinki, Finland as a Brittingham Viking scholar.

Nicole and her husband Jeff reside in Milwaukee, Wisconsin with their son (Finn) and Bernese Mountain Dog (Teddy). She enjoys cooking, reading, and traveling - especially to Scandinavia and Southeast Asia.